

AIR COMFORT SYSTEMS CO.,LTD.



AIR COMFORT

SYSTEMS CO.,LTD.

LIST...

Ceiling Diffusers	03 ~ 06
Grilles	07 ~ 09
Slot & Linear	10
Dampers	11
Registers	12~14
Other Grilles	15
Exhaust Fans	16 ~ 17
Duct & Accessories	18 ~ 19



CEILING DIFFUSERS



CD-A

Square Ceiling Diffuser

- Made Of High Quality Aluminum
- With Removable Core
- Neck Size 150mm~600mm



CD-M

Square Ceiling Diffuser

- Made Of High Quality Aluminum
- With Removable Core
- Neck Size 150mm~600mm



CD-P

Square Ceiling Diffuser

- Made Of High Quality Aluminum
- With Removable Core
- Neck Size 150mm~450mm



CD-C

Square Ceiling Diffuser

- Made Of High Quality Aluminum
- With Removable Core
- Neck Size 150mm~600mm



CD-2

Square Ceiling Diffuser

- Made Of High Quality Aluminum
- With Removable Core
- Neck Size 150mm~600mm



CD-3

Square Ceiling Diffuser

- Made Of High Quality Aluminum
- With Removable Core
- Neck Size 150mm~600mm



CD-R

Square Ceiling Diffuser

- Made Of High Quality Aluminum
- With Removable Core
- Neck Size 150mm~450mm



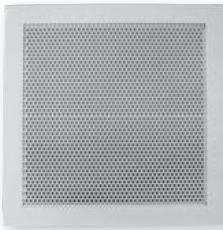
ADCD

Louvre Faced Ceiling Diffuser

- Polished Aluminium light weight construction
- No spring or clips inhibiting chance of rattle
- Available in flush frame and bevel frame
- No section protruding past neck allowing tight fit for adaptors



CEILING DIFFUSERS



PD

Perforated Diffuser

- Aluminium light weight construction
- Perforated insert is easily removed for maintenance and cleaning
- 50% free area



SD

Swirl Diffuser

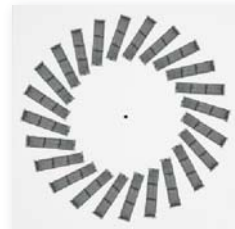
- Made Of High Quality Galvanized Steel
- Designed For Ceiling Tile Replacement
- Overall size 595mm×595mm



SD-A16

Swirl Diffuser

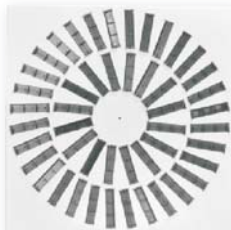
- Made Of High Quality Galvanized Steel
- With Control Blades
- Standard Size 595mm×595mm



SD-A24

Swirl Diffuser

- Made Of High Quality Galvanized Steel
- With Control Blades
- Standard Size 595mm×595mm



SD-A48

Swirl Diffuser

- Made Of High Quality Galvanized Steel
- With Control Blades
- Standard Size 595mm×595mm



SD-C

Curved Blades Swirl Diffuser

- Made Of High Quality Aluminum
- Size 400mm~600mm



RD

Round Ceiling Diffuser

- Made Of High Quality Aluminum
- With Removable Core
- With Butterfly Damper
- Installation Beam Optional
- Size 150mm~350mm



RD-R

Round Ceiling Diffuser

- Made Of High Quality Aluminum
- Designe For Ceiling Tile Replacement
- Size 150mm~350mm

CEILING DIFFUSERS



RD-H

Round Ceiling Diffuser

- Made Of High Quality Aluminum
- With Removable Core
- Diameter 146mm~640mm



RD-HR

Round Ceiling Diffuser

- Made Of High Quality Aluminum
- With Removable Core
- Diameter 146mm~640mm



ADSCD

Spun Circular Diffuser

- Polished Aluminium light weight construction
- Removable core via positive centre screw
- Three cone suitable for heating, cooling and ventilation
- Adjustment of centre cone allows varying air patterns



JD-A

Jet Nozzle A

- Made Of High Quality Aluminum
- Diameter 125mm~400mm



JD-B

Jet Nozzle B

- Made Of High Quality Aluminum
- Diameter 125mm~400mm



JD-C

Jet Diffuser C

- Made Of High Quality Aluminum
- Diameter 150mm~350mm



JD-D

Drum Jet Diffuser

- Made Of High Quality Aluminum
- All Sizes Available



JD-E

Jet Diffuser

- Aluminium, light weight construction
- Interchangeable between "Jet" and "diffuse" position
- Ideal for high ceilings providing maximum throw
- Available with mounting plate / spigot / barrel / sleeve
- Supplied with locking nuts to facilitate fixing to existing duct
- Powder coated finish



CEILING DIFFUSERS



SD-R

Round Swirl Diffuser

- Made Of High Quality Aluminum
- Size 200mm~400mm



DVD-P

Plastic Disk Valve

- Made of Plastic
- Diameter 100mm~200mm



DVD-S

Disk Valve

- Made Of High Quality Galvanized Steel
- Diameter 100mm~200mm

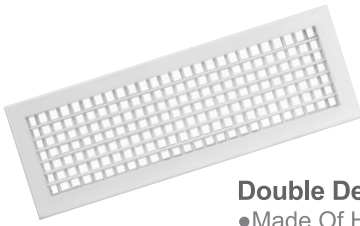


DVD-E

Disk Valve

- Made Of High Quality Galvanized Steel
- Diameter 100mm~200mm

GRILLES



DDG

Double Deflection Grille

- Made Of High Quality Aluminum
- All Sizes Available



SDG

Single Deflection Grille

- Made Of High Quality Aluminum
- All Sizes Available



RG-A

Return Grille A

- Made Of High Quality Aluminum
- All Sizes Available



RG-AH

Return Grille A (Hinged)

- Made Of High Quality Aluminum
- All Sizes Available



RG-B

Return Grille B

- Made Of High Quality Aluminum
- All Sizes Available



RG-PL

Plastic Return Air Grille

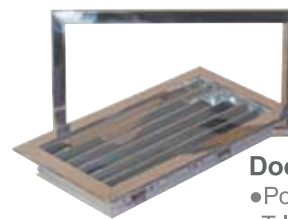
- Plastic with filter
- Light weight construction
- Filter removable for easy cleaning
- Size: 250mm~590mm



DG

Door Grille

- Made Of High Quality Aluminum
- All Sizes Available



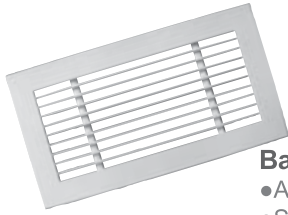
ADDG

Door Grille

- Polished Aluminium light weight construction
- Telesopic adjustment to fit doors 25 - 45mm wide
- For doors and partitions where finished appearance is required on each side



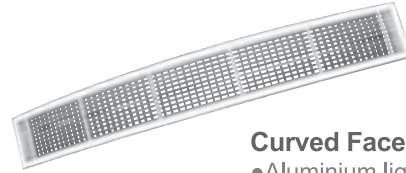
GRILLES



BG

Bar Grille

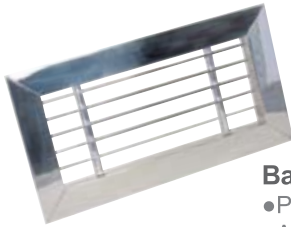
- Aluminium light weight construction
- Sections can be butted together for continued installation
- Blade profile 25 x 3mm aluminium flat bar at 18mm centres



BG-C

Curved Face Bar Grille

- Aluminium light weight construction
- Concave and convex styles available
- Can be fitted to rear



ADBG

Bar Grille

- Polished Aluminium light weight construction
- Alignment joining pieces supplied
- Ideal for supply or exhaust applications



PRL-A

Pressure Relief Louver A

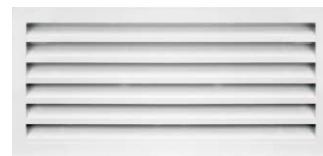
- Made Of High Quality Aluminum
- All Sizes Available



PRL-B

Pressure Relief Louver B

- Made Of High Quality Aluminum
- All Sizes Available



WL

Weather Louver

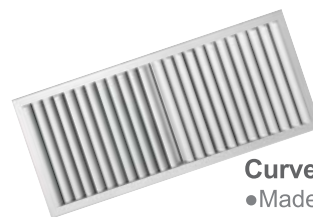
- Made Of High Quality Aluminum
- All Sizes Available



WL-R

Weather Louver

- Made Of High Quality Aluminum
- All Sizes Available



CG-2

Curved Blades Grille

- Made Of High Quality Aluminum
- All Sizes Available

GRILLES



PG-1

Plastic Grille

- Fixed blade
- Multi directional blades
- Fast action fixing
- Size: 300mm~525mm



PG-2

Plastic Grille

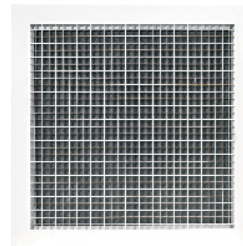
- Adjustable blades
- Multi directional blades
- Fast action fixing
- With neck adaptor
- Size: 300mm~450mm



PG-3

Plastic Grille

- Fixed blade
- Multi directional blades
- Fast action fixing
- Size: 230mm~525mm



EG

Egg Crate Grille

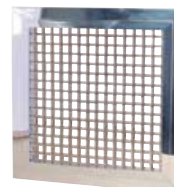
- Made Of High Quality Aluminum
- Size Below 1200mm×1200mm



EG-H

Egg Crate Grille

- Made Of High Quality Aluminum
- All Sizes Available



ADLE

Egg Crate Grille

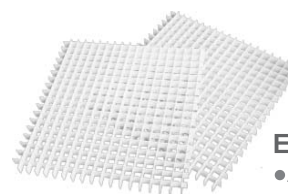
- Polished Aluminium light weight construction
- ADLS - Linear Slot Difuser
- Adjustable Blades



EG-R

Round Egg Crate Grille

- Fixed blade
- Multi directional blades
- Fast action fixing
- Size: 300mm~525mm



EG-C

Egg Crate Core

- Adjustable blades
- Multi directional blades
- Fast action fixing
- With neck adaptor
- Size: 300mm~450mm



SLOT & LINEAR



LS-A

Linear Slot A

- Made Of High Quality Aluminum



LS-B

Linear Slot B

- Made Of High Quality Aluminum



LS-C

Linear Slot C

- Aluminium light weight construction
- Joining piece supplied to assist alignment
- Removable core available on request



ADLS

Polished Linear Slot

- Polished Aluminium light weight construction
- Wide linears supplied in sections to appear as continuous
- Joining piece supplied to assist alignment



LG-1

Linear Grille

- Made Of High Quality Aluminum
- 0°,15°,30° blades available
- All Sizes Available



LG-2

Linear Grille

- Made Of High Quality Aluminum
- 0°,15°,30° blades available
- All Sizes Available



LG-H

Hinged Linear Grille

- Made Of High Quality Aluminum
- Filter as Option
- All Sizes Available



LG-R

Round Linear Grille

- Made Of High Quality Aluminum
- Size 150mm~300mm

DAMPERS



OBD-M

OBD-M

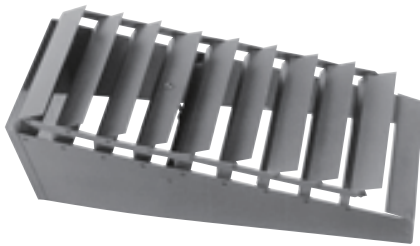
- Mechanical operated
- Made of High Quality Aluminum



OBD-G

OBD-G

- Gearwheel operated
- Made of High Quality Aluminum



SSD

Stream Splittel Damper

- Aluminium extruded high quality blades
- Easy screw adjustment to open and close blades
- Matt black finish
- Manufactured to slide inside neck of grille



NRD

Non Return Damper

- Light weight extruded aluminium construction
- Nylon bearings
- Foam tip seals to reduce leakage
- Mill finish



VCD

Volume Control Damper

- Made of High Quality Aluminum
- Size 150mm~1000mm



Slide VCD

Slide VCD

- Made of Galvanized Steel



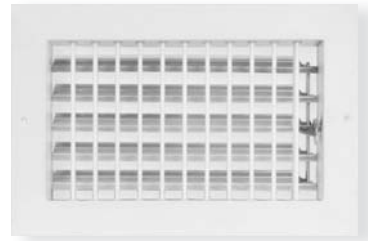
REGISTERS



AR-1

Aluminum Register

- Made Of High Quality Aluminum
- All Sizes Available



AR-2

Aluminum Register

- Made Of High Quality Aluminum
- All Sizes Available



SR-1

Steel Register

- Made Of High Quality Galvanized Steel
- All Sizes Available



SR-2

Steel Register

- Made Of High Quality Galvanized Steel
- All Sizes Available



LPC-1

Aluminum Register

- Made Of High Quality Aluminum
- Size 150mm~350mm



LPC-2

Aluminum Register

- Made Of High Quality Aluminum
- Size 150mm~350mm

REGISTERS



LPC-3

Aluminum Register

- Made Of High Quality Aluminum
- Size 150mm~350mm



LPC-4

Aluminum Register

- Made Of High Quality Aluminum
- Size 150mm~350mm



DVCR

Direct Vent Ceiling Register

- Multi directional adjustable blades
- Fast action fixing
- Stylish modern appearance
- Unique snap together adaptor
- Blades are removable for easy cleaning



DJCR

Down Jet Ceiling Register

- Connects straight onto flexible ductwork
- Fast action fixing
- Stylish modern appearance
- Adjustable for balancing
- No need to square up to walls



RCCR

Round Core Ceiling Registers

- Connects straight onto flexible ductwork
- Fast action fixing
- Stylish modern appearance
- Adjustable for balancing
- No need to square up to walls



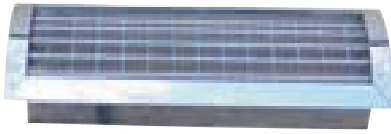
SECR

Slide Entry Direct Vent Ceiling Register

- Ideal for restricted spaces and multi storey ceiling
- Multi directional adjustable blades
- Fast action fixing
- Unique snap together adaptor
- Blades are removable for easy cleaning



REGISTERS



ADCFDD

Curved Face Double Deflection Register

- Polished Aluminium light weight construction
- Frame curved to suit spiro duct
- Front core blades follow curve of face
- Concave and convex curves available



ADDD

Double Deflection Wall Register

- Polished Aluminium light weight construction
- Horizontal & Vertical blades allowing distribution adjustment
- Blade adjustment in both directions
- Support mullions fitted if blade length exceeds 600mm



FR-V

Floor Register

- Made Of High Quality Galvanized Steel
- Easy-to-operate Damper control
- Eight Styles of Finishes

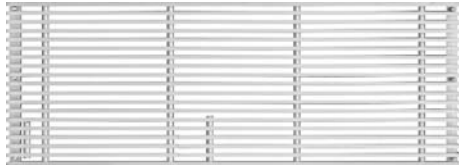


FR

Floor Register

- Made Of High Quality Galvanized Steel
- Easy-to-operate Damper control
- Eight Styles of Finishes

OTHER GRILLES



FG-A

Floor Grille

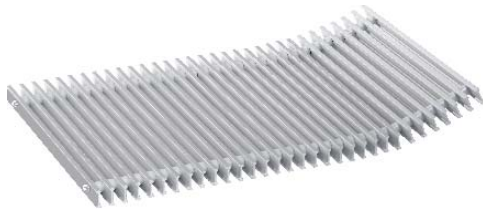
- Made Of High Quality Aluminum



FG-B

Floor Grille

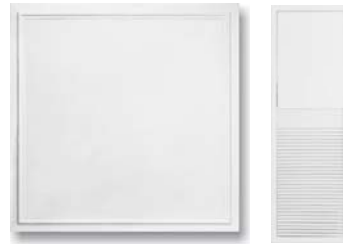
- Made Of High Quality Aluminum



FG-F

Flexible Floor Grille

- Made Of High Quality Aluminum
- All Sizes Available



Access Door

Access Door

- Made Of High Quality Aluminum
- All Sizes Available



BWG-S

Ball Weather Louver

- Made Of Stainless Steel



BWG-A

Ball Weather Louver

- Made Of High Quality Aluminum



EXHAUST FANS — *Exhaust Fans (Ceiling)*



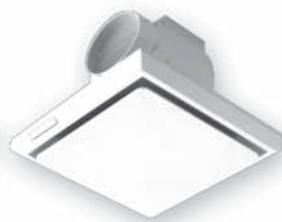
BPT10-21/801



BPT10-21/802



BPT10-21/803



BPT10-21/805



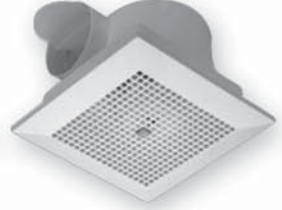
BPT10-21/808



BPT10-21/806Z



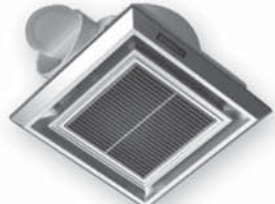
BPT10-11F6A



BPT10-11Y6



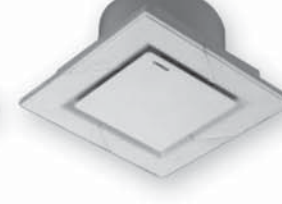
BPT10-11F5



BPT10-11F6



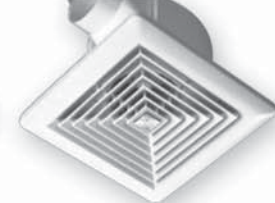
BPT10-13/321



BPT10-13/322



BPT10-13/323



BPT15-43F51



BPT15-43F52



BPT15-43F53



BPT15-43F52A



BPT10-31F56



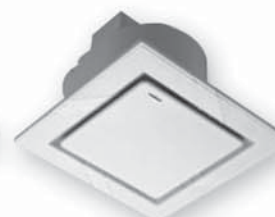
BPT10-31F56Z



BPT10-31F57Z



BPT10-31F57



BPT10-31F58



BPT15-43/365



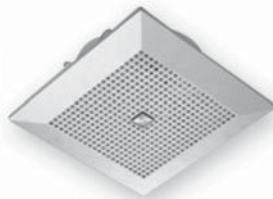
CPB25-328BS



EXHAUST FANS



CPB25-328B



CPB25-328C



DPT15-131



DPT10-111

Exhaust Fans (Wall)



APB15-3F/532



APB15-3F/532X



APB10-1/232



APB10-1/238



APB15-3/531



APB10-1/231



APB10-1/235



APB10-1F8



APB10-1F8A



APB10-1F8B



APB12-2F12



APB12-2F12Y



APB15-3F15



APB15-3F15A



APB15-3F15B



APB20-4F7A



APB20-4F7B



APB25-5F25A



APB25-5F25B



APB10-13W2



DUCT & ACCESSORIES



Reducer-v2



Y-piece-v2



Iso Duct



Filter Box



Steel VCD



Acoustic Insulated



Round Steel VCD



T Connector



Semi Duct



Connector



Reducer



Combi Duct



One-way Shutter



Duct Mouth



Rectang Ular Duct



Flange Conner



Corner Clamps



Alu Duct



Clamp Connector



Holder



PVC Duct

DUCT & ACCESSORIES



Duct Board



Fluoro-Resin Connector



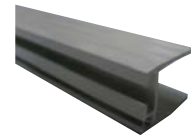
Insulation Tape



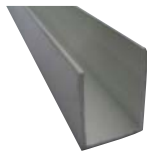
PVC Duct Tape



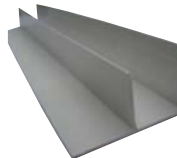
Aluminum Duct Tape



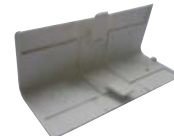
Face Flange



U-type Flange



F-type Flange



Covering Angle



Corner Flange



H-type Cutting



Special Sealant



V-type Cutter Knife



Straight Cutter Knife



45 Cutter Knife(R)



45 Cutter Knife(L)



PVC Disk



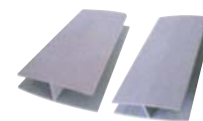
Zinc Coated Disk



Iron Corner



Special Glue



H-type Flange



AIR COMFORT

SYSTEMS CO., LTD.

Air Comfort Systems Co. is established reputation for excellence in manufacturing standard and tailor-made products precisely designed and implemented for its customers' specific needs. With 18 years of experience in production of ventilation and accessories, factory working area of more than 20,000sqms, an experienced tool room and 200+ skilled staff, we make a wide range of eggcrate sheets, diffusers, grilles, duct and fans.

Unit 1109, No 1438 Shanxi Bei Rd, Shanghai 200060, China.

Tel: +86-21-62275790

Fax: +86-21-62278379

www.aircomfortsystems.net

info@soldia.com.cn